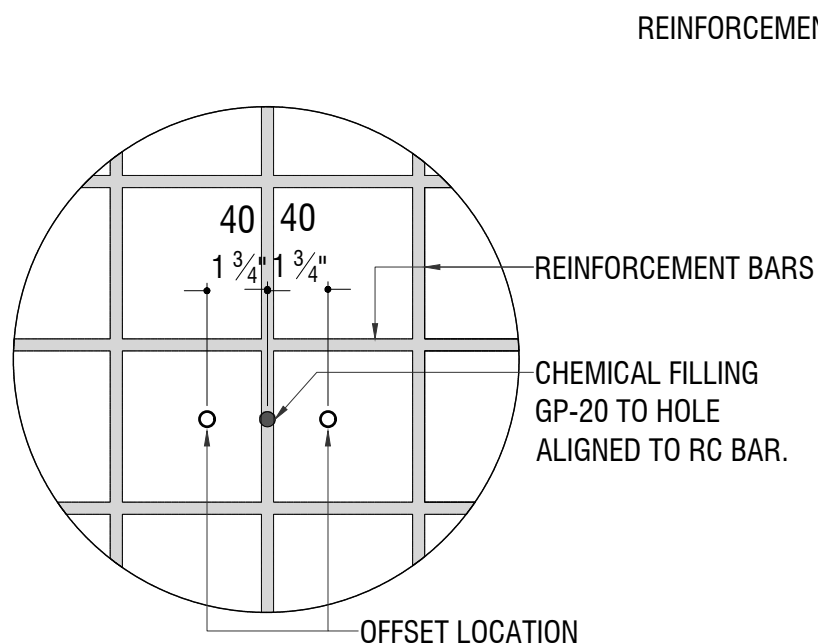


SECTIONAL VIEW

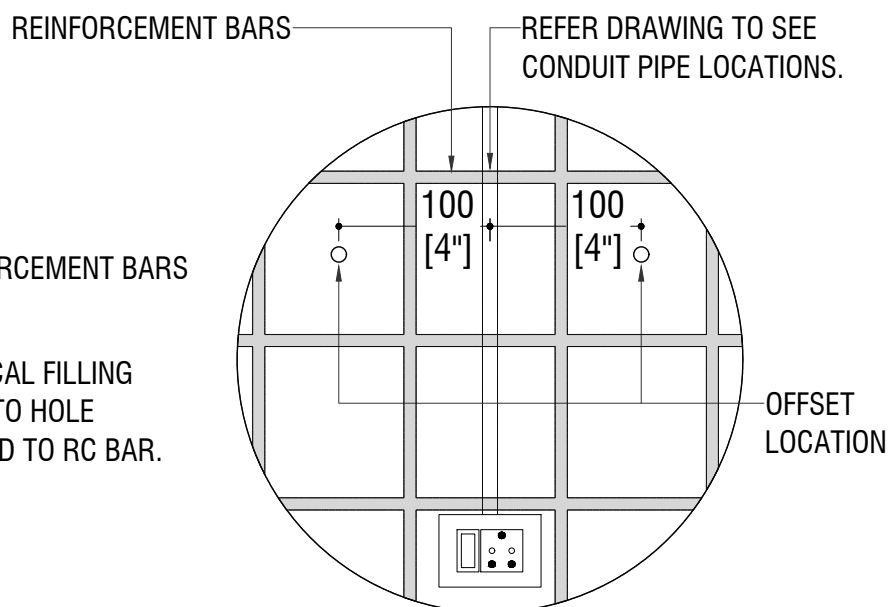
THE MAXIMUM DRILLING DEPTH SHOULD BE 2 INCHES (50 MM). PLEASE REFER TO THE WATER PIPE LINE DRAWINGS TO DETERMINE WHERE THE AC IS TO BE FIXED AGAINST THE TOILET WALL.

AC BRACKET FIXING METHOD AXONOMETRY



DRILLING LOCATION ADJUSTMENT

IF THE DRILLING LOCATION ALIGNS WITH A WALL REINFORCEMENT BAR, RE-DRILL WITH A $1 \frac{3}{4}$ INCH (40 MM) OFFSET FROM THE ORIGINAL DRILLED LOCATION. IN THIS CASE, FILL THE HOLE THAT ALIGNS WITH THE RC BAR USING GP-20 HIGH STRENGTH NON-SHRINK GROUT.



DRILLING LOCATION WITH CONDUIT

REFER TO CONDUIT PIPE LOCATION DRAWINGS TO SEE THE WALL AREAS WHICH CANNOT BE DRILLED. (REFER TO ANNEX.) IF THE DRILLING LOCATION ALIGNS WITH A CONDUIT PIPE, THERE SHOULD BE A MINIMUM OF 4 INCHES (100MM) FROM BOTH SIDES OF THE CONDUIT.